

1、Precautions

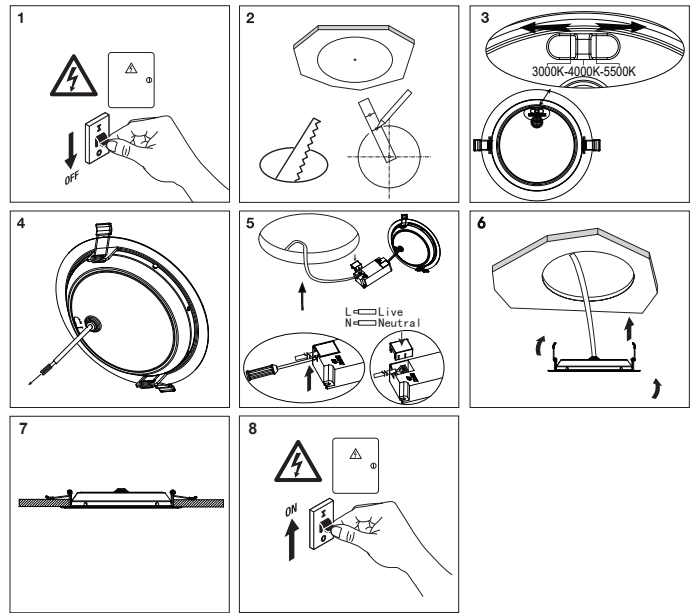
1. Read instruction carefully before installation and keep in for future reference.
2. Product installation, repair, maintenance, demolition must be performed when power is off to avoid any accident. We recommend this part to be done by a qualified electrician.
3. The use of ambient temperature is $-20\text{ }^{\circ}\text{C} \sim +45\text{ }^{\circ}\text{C}$, exceeding this range will have an impact on the lifetime of the product.
4. Do not use rough cloth to clean the product, otherwise it will cause damage to the housing. The use of aggressive cleaning products or soluble chemical solution will destroy the protective layer of the surface.
5. Only use soft, dry cloth to clean the inside of the reflector and LED source. Do not vigorously wipe or squeeze with damp cloth. Cleaning solution is prohibited to use for cleaning.
6. When the lamp lifetime is reached, please do not throw away, recycle accordingly. May seek local authorities or retailer for recycling program.
7. The product is not allowed to be covered by any insulating material! So as not to affect the heat dissipation of the product and cause damage and accidents

Warning

Product cannot be disassemble, external flexible cable or cord cannot be replaced; if any wire is damaged, please let a qualified electrician to repair or dispose bulbs that cannot be replace. Beware of fire prevention, electricity, and shock.

★ The company reserves the right to modify product specifications without any prior notice

5、Installation Diagram



Installation Guide:

1. Please turn off the power before installation
2. Before installation, please look at the model in the label is corresponding to the size of the product model in the manual, use a compass to draw a circle on the specified position of the ceiling, and then use the proper tool (saw or electric saw) to cut the hole, the thickness of the ceiling 5-17mm, see the installation diagram step 2
3. Turn the dip switch to the desired position
4. Before connecting cable into driver, protection of wire ends cap need to be remove
5. From the installation hole to place the mains power cord and connect the product (input voltage according to the label requirements on downlight). Insert the main power wire into the terminal hole and install the power cable cover, see installation diagram step 4
6. Pull the side spring of the product upward with both hands, and insert the product into the installation hole, see installation diagram step 5
7. Adjust the product to fit well with the ceiling, and turn on the power supply to light up, see installation diagram step 6
8. Complete installation, it can be used by connecting to the mains power supply



Note: Products need to be equipped with a certified 60Vdc SELV power supply

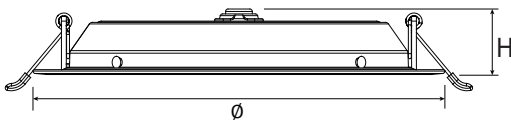
2、Model No.

Code	Product Description	Input	Wattage	Operating temperature	Dimension $\phi \times H$ (mm)	Cut Out
28004062	DLA flat 100mm 880lm 830-855 SNC3	250mA	8.8W	- 20~45 $^{\circ}\text{C}$	$\phi 120 \times H27$ mm	$\phi 100$ mm
28004063	DLA flat 150mm 1500lm 830-855 SNC3	350mA	13W	- 20~45 $^{\circ}\text{C}$	$\phi 170 \times H27$ mm	$\phi 150$ mm
28004064	DLA flat 200mm 2160lm 830-855 SNC3	500mA	18W	- 20~45 $^{\circ}\text{C}$	$\phi 220 \times H27$ mm	$\phi 200$ mm

3、Packaging Details/Installation Instruments

Packaging Details	LED Downlight 20PCS manual 1PCS
Installation Instruments	<p>Ladder, Pliers, Screwdriver, Electric saw, Compasses</p>

4、Product Dimension (mm)



- 28004062: $\phi = 120$ H=27
- 28004063: $\phi = 170$ H=27
- 28004064: $\phi = 220$ H=27