

Let emergencies be our problem



TRIDONIC

Let emergencies be our problem



TRIDONIC

When the power fails

You can count on us

Sometimes emergency lighting seems like a necessary evil, with extensive legislation and standards regulating the type and quantity of the special luminaires required right down to the finest detail. This is a specialist area for experts.

But let's not forget the real purpose of the exercise. When all is said and done, emergency lighting saves lives.

Our aim is to make emergency lighting as simple and efficient as possible. Instead of raising questions we offer solutions.

Let emergencies be our problem



1. The combined solution

General lighting and emergency lighting combined in one common housing. In our example, every second downlight is equipped with an emergency lighting function. The battery is also built into the luminaire housing.







Illuminance in an emergency is at least 0.5 lux. This corresponds to twice the value of the light on a clear full moon night

The combined solution

Round LED surface-mounted luminaire

- Manually tested
- corridorFUNCTION for motion detectors
- 1 or 3 h operating time

The combined solution

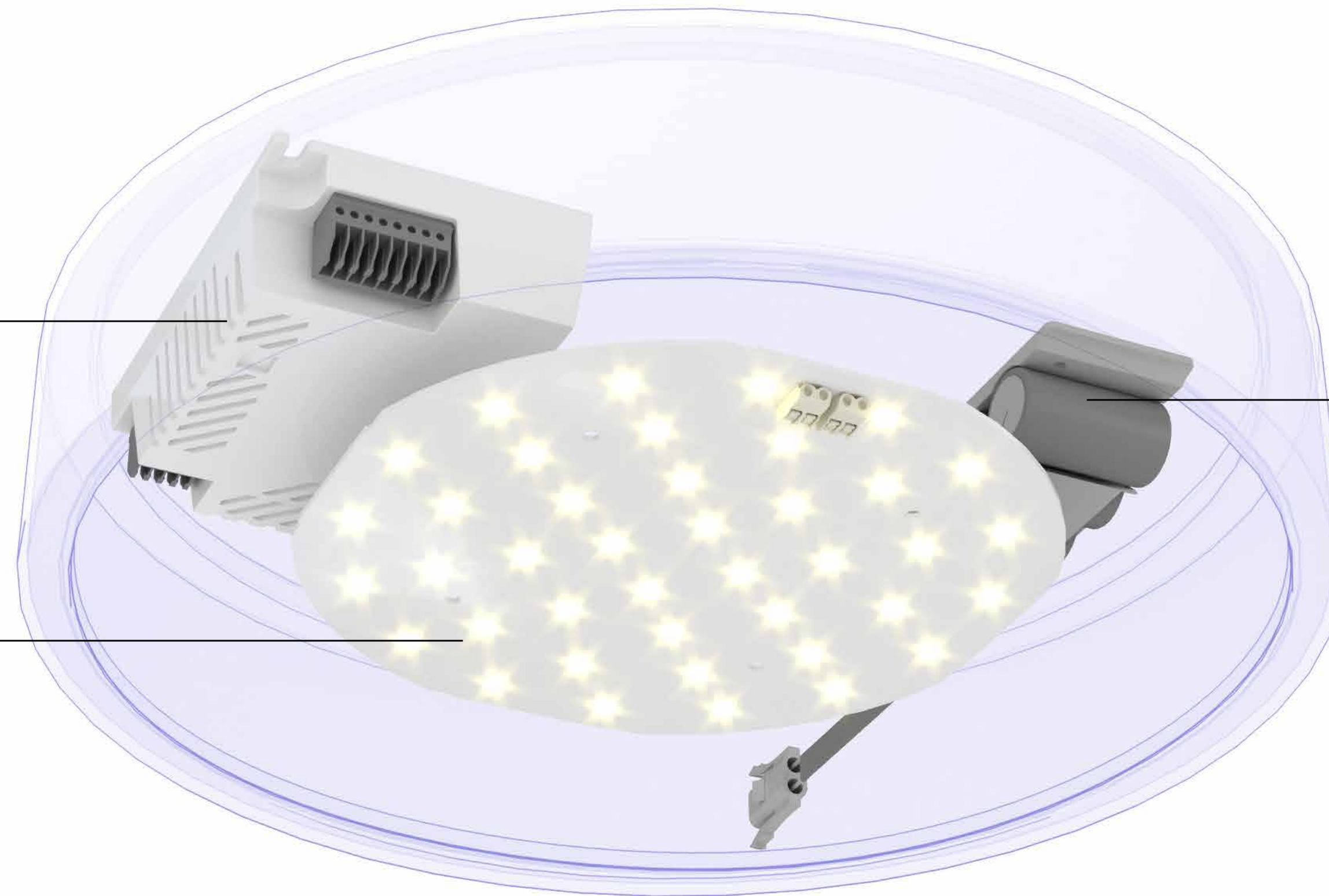


The combined solution

EM powerLED 15 W BASIC CLE NiMH

CLE 190 mm 2,500 lm 840 ADV4 EM

Accu-NiMH 3A



Product overview



Emergency light driver
EM powerLED 12/15 W BASIC CLE
[More information >](#)



**LED module with integrated
emergency light LED**
CLE 190 mm 2,500 lm 840 ADV4 EM
[More information >](#)



Emergency lighting battery
NiMH Accu 3A
[More information >](#)

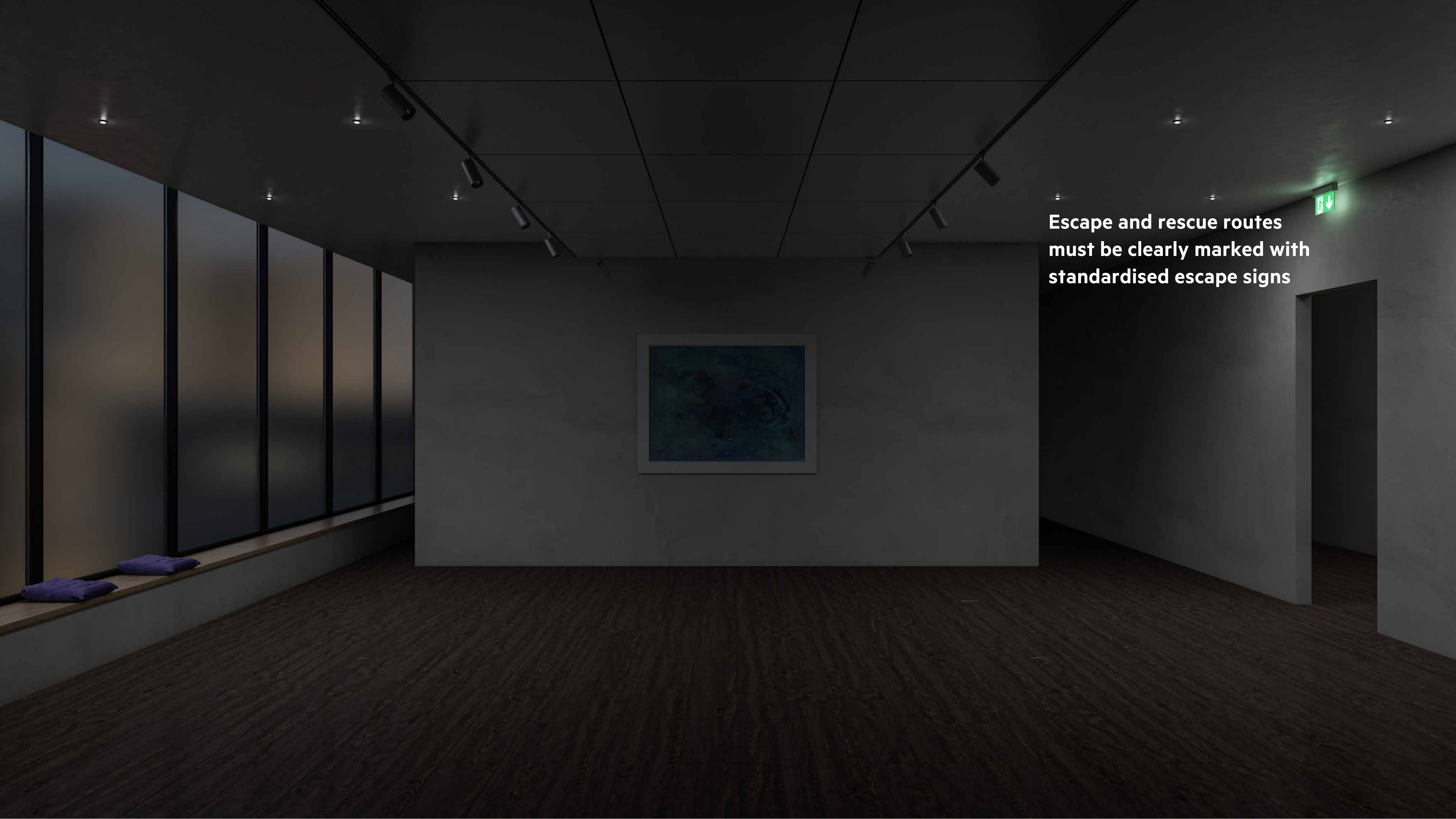


2. The simple solution

Depending on the application, you can choose one of three included lenses for anti-panic, escape route or spot illumination.



**Escape and rescue routes
must be clearly marked with
standardised escape signs**



The simple solution

Round LED recessed luminaire

- 40 mm diameter
- 1 or 3 hr operating time
- DALI
- LiFePO₄ Accu

The simple solution

EM ready2apply PRO NM 132 2W



Product overview



EM ready2apply ceiling installation

EM LED Light sources

[More information >](#)



3. The integrated solution

With this solution, the emergency lighting components can be installed in almost any type of luminaire.



2





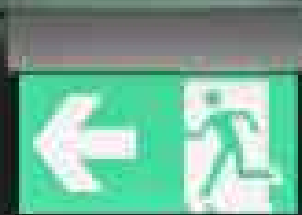
2



Emergency lighting and sprinkler systems are essential parts of the building's safety equipment



The integrated solution

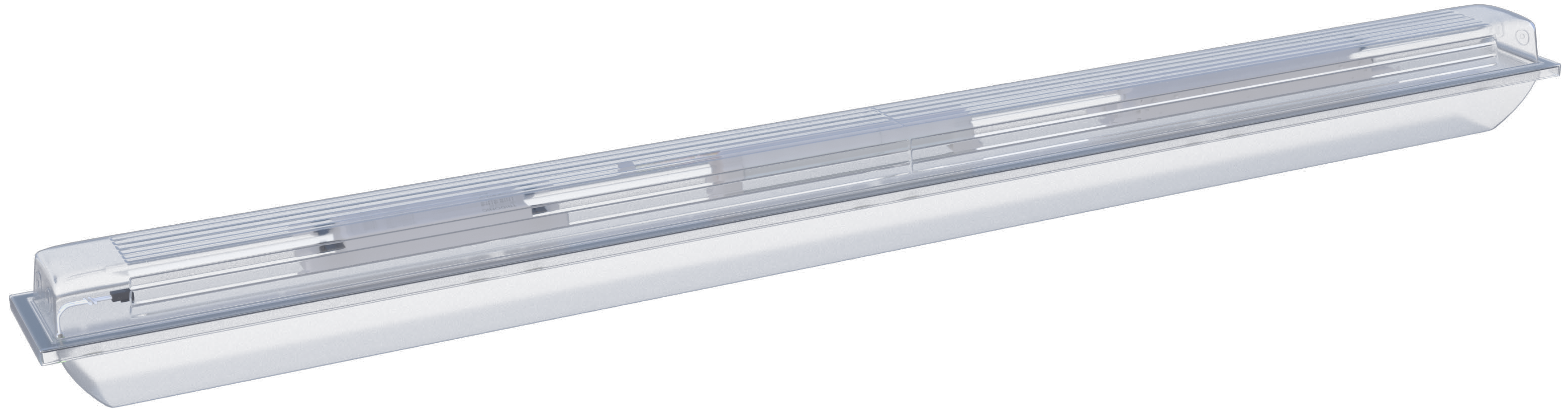


Moisture-proof luminaire

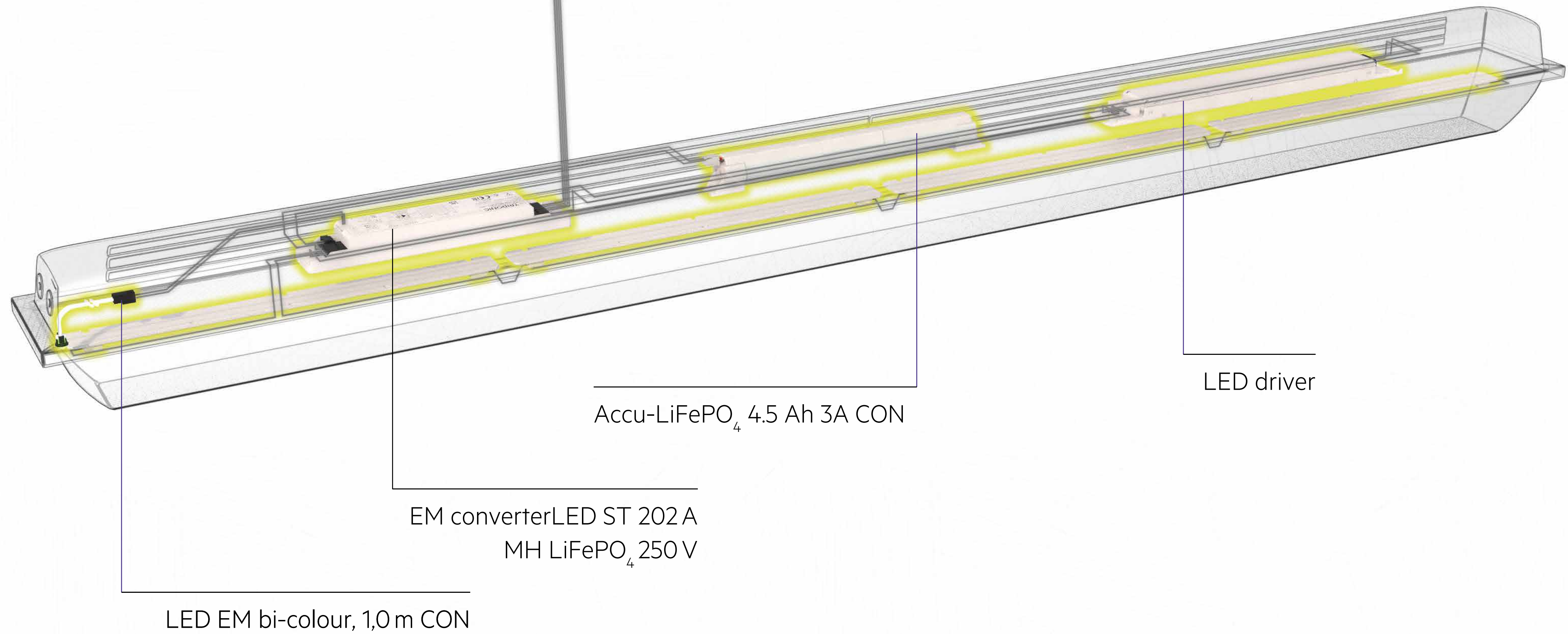
- Dust protected
- Resistant
- Integrated self-test function



The integrated solution



The integrated solution



Product overview



Emergency light Accu

Accu LiFePO₄

[More information >](#)



Emergency lighting driver

EM converter LED ST 202 A MH LiFePO₄

[More information >](#)



Emergency lighting LED

LED EM bi-colour, 1.0 m CON

See EM converterLED accessories



4. The bright solution

Large ceiling heights in industrial halls with more than 8 m, place special demands on the performance of the emergency lighting. With our powerful EM ready2apply products you can cope with ceiling heights of up to 14 m.





Special emergency luminaires provide the optimum light distribution. This reduces the number of required emergency luminaires



The image shows a dark, industrial interior, likely a warehouse or factory. The ceiling is made of dark, corrugated metal panels. A single, small, rectangular LED emergency light module is mounted on the ceiling, emitting a bright white light. The rest of the scene is dimly lit, showing structural beams and some equipment in the background. The text "LED emergency light module for surface-mounted installation" is overlaid in white on the right side of the image.

**LED emergency light module for
surface-mounted installation**

The bright solution

EM R2A PRO SM NM 134 SMh



Product overview



EM ready2apply surface-mounted installation

EM R2A PRO SM NM 134 SMh


[More information >](#)



5. The bright integrated solution

Integration of the emergency light into the general lighting luminaire lighting is also possible with high ceilings and robust industrial luminaires.



A wide-angle, low-angle shot of a large industrial factory floor. The scene is dimly lit, with several bright spots from recessed ceiling lights. In the foreground on the left, a large white industrial machine with a purple robotic arm is visible. In the center, there are several tall metal shelving units filled with boxes. To the right, another large machine with a yellow robotic arm is visible. The floor is dark and polished, reflecting some of the overhead lights. The ceiling is high and features a complex network of pipes and ducts.

**Using the same luminaires
also for emergency lighting
reduces the number of
luminaires required**



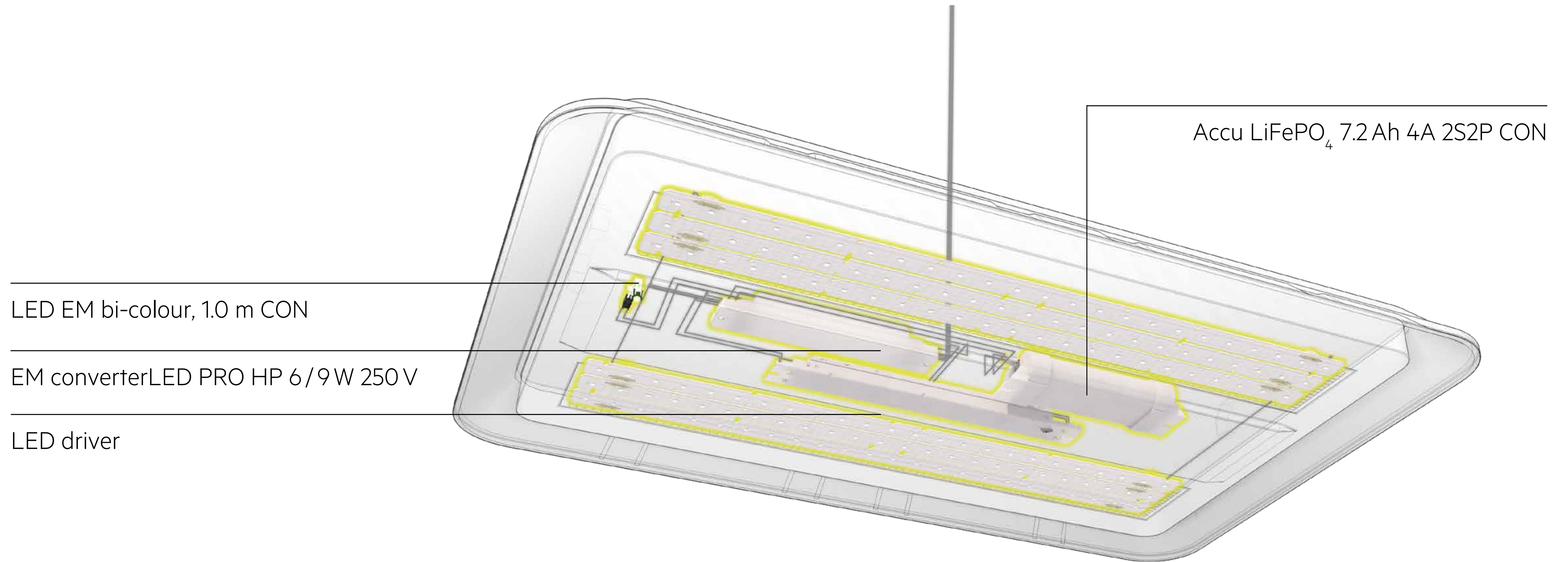
Highbay Industrial Light

- Robust and IP protected
- Centrally controlled emergency lighting tests

The light-integrated solution



The light-integrated solution



Product overview



Emergency lighting driver

EM converterLED PRO HP 6/9W 250 V

[More information >](#)



Emergency lighting Accus

LiFePO₄ Accus 3.6–7.2 Ah

[More information >](#)



Emergency light LED

LED EM bi-colour, 1.0 m CON

See EM converterLED accessories

TRIDONIC

Headquarters

Tridonic GmbH & Co KG

Färbergasse 15 | 6851 Dornbirn, Austria

T +43 5572 395-0 | F +43 5572 20176

www.tridonic.com | sales@tridonic.com



10/22 Subject to change without notice. Information without guarantee.