

**connecDIM Gateway G1**  
Ethernet TCP/IP to DALI



**Product description**

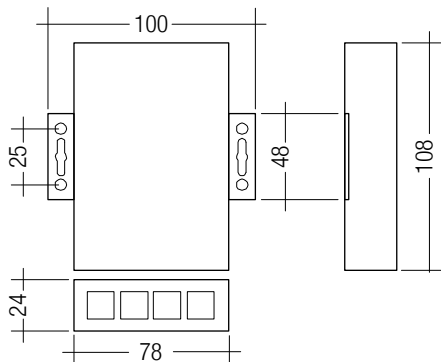
- \_ Independent lighting control for up to 256 DALI gears on 4 DALI lines
- \_ Can be expanded by connecting multiple gateways on the same network
- \_ Cloud based web interface for configuration and monitoring
- \_ Setup via mobile App or Cloud service
- \_ Status LED for indicating the operating status
- \_ Connects to Tridonic DALI Interface RS232 PS/S
- \_ Cross DALI line control
- \_ Freely programmable daily scheduling with calendar function
- \_ DALI emergency lighting unit test scheduling and monitoring via the connecDIM Cloud
- \_ 5 years guarantee (conditions at <https://www.tridonic.com/en/int/services/manufacture-guarantee-conditions>)

**Website**

<http://www.tridonic.com/28000966>



**connecDIM Gateway G1**  
 Ethernet TCP/IP to DALI



**Ordering data**

Type	Article number	Packaging, carton	Weight per pc.
connecDIM Gateway G1	28000966	1 pc(s).	0.405 kg

**Technical data**

Rated voltage range DC	9 – 48 V
Power consumption	3.6 W (300 mA @ 12 V DC)
DALI interface RS232 PS/S ports	4 x RJ45 serial ports
Ethernet port	1 x 10/100 Mbit/s
Status indicators LED	Power, Ready, Ethernet, Serial Port
Operating temperature	0 ... +70 °C
Mounting	Tabs with screw terminals; DIN rail kit available
Housing material	Fanless metal casing
Type of protection	IP20
Dimensions L x W x H	108 x 100 x 24 mm

**Approval marks**



**Standards**

EN 61347-1, EN 61347-2-11, EN 60950-1, EN 55022, EN 55015, EN 61547, EN 61000-3-2, EN 61000-3-3, EN 61000-6-2, EN 50581

DALI Interface RS232 PS/S

Accessory

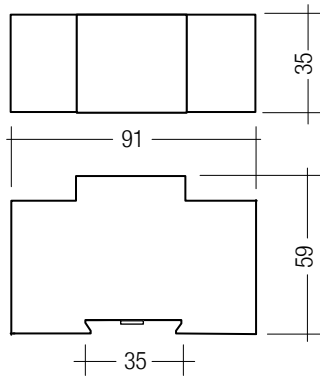


Product description

- \_ Combines interface module and DALI power supply
- \_ Integrated power supply with 240 mA for DALI devices or DALI control modules without power supply
- \_ Interface module for connection of DALI systems with computer or programmable control systems
- \_ For installation in switching cabinets
- \_ 5 years guarantee (conditions at <https://www.tridonic.com/en/int/services/manufacturer-guarantee-conditions>)

Website

<http://www.tridonic.com/28001847>



Ordering data

Type	Article number	Packaging, carton	Weight per pc.
DALI Interface RS232 PS/S	28001847	100 pc(s).	0.09 kg

Approval marks



## connecDIM RS232 cable

Accessory

**Product description**

- \_ Connection cable 1 m for connection of a DALI Interface RS232 PS/S to the connecDIM Gateway G1
- \_ RJ45 to RJ45
- \_ Transparent connector: connection to connecDIM Gateway G1
- \_ Black connector: connection to DALI Interface RS232 PS/S

**Website**

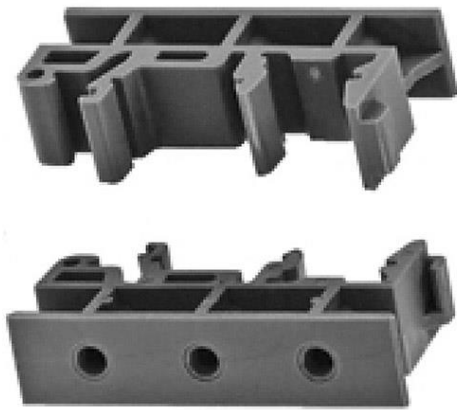
<http://www.tridonic.com/28000968>

**Ordering data**

Type	Article number	Length	Packaging, carton	Weight per pc.
connecDIM RS232 cable	28000968	1 m	1 pc(s).	0.06 kg

## connecDIM DIN-RAIL Mounting Kit

Accessory

**Product description**

- \_ DIN-RAIL Mounting Clips to mount the connecDIM Gateway G1 onto a 35 mm DIN-RAIL

**Website**

<http://www.tridonic.com/28000969>

**Ordering data**

Type	Article number	Packaging, carton	Weight per pc.
connecDIM DIN-RAIL Mounting Kit	28000969	1 pc(s).	0.03 kg

mains adapter x-touchPANEL

Accessory



**Product description**

- \_ Power supply for the DALI x-touchPANEL and the DALI e-touchPANEL
- \_ The mains adapter is rated at 36 V
- \_ Max. 2 gateways can be connected

**Website**

<http://www.tridonic.com/24166012>



**Ordering data**

Type	Article number	Packaging, carton	Weight per pc.
mains adapter x-touchPANEL	24166012	1 pc(s).	0.155 kg

## 1. Standards

- EN 61347-1
- EN 61347-2-11
- EN 60950-1
- EN 55022
- EN 55015
- EN 61547
- EN 61000-3-2
- EN 61000-3-3
- EN 61000-6-2
- EN 50581

## 2. Common

### 2.1 Overview

The connecDIM system consists of a single four-channel RS232 Ethernet gateway connected to Tridonic DALI Interface RS232 PS/S and a wireless router. This enables 4 x 64 DALI devices to be networked and this DALI circuit to be controlled as a whole, thanks to controllers connected to the DALI circuit with mobile devices (iOS or Android operating system), irrespective of whether T5, T8, LED or Tunable White DALI devices are used. The system can be expanded to more than 4 DALI lines by connecting multiple connecDIM Gateways to the network. This allows local DALI control devices such as DALI XC or DALI MSensors to control multiple devices on multiple DALI lines. The connecDIM system is a solution for providing DALI control over multiple DALI lines.

It also enables DALI system to be commissioned without having to use a laptop or dedicated software.

Two apps are available for the connecDIM System. connecDIM Architect, commissioning app, available for iOS and connecDIM Lite, end-user app, available for iOS and Android. Existing DALI applications can be simply upgraded by replacing the DALI power supply with DALI Interface RS232 PS/S and connecting the connecDIM Gateway. If an internet connection is used the system can be easily made available on the connecDIM Cloud.

### 2.2 Storage of data

The connecDIM system collects data and stores it in the cloud. Our storage policy is as follows:

- If the connecDIM system is used in combination with emergency applications, these emergency application data will be stored for a maximum of 24 months. Data older than 24 months will be automatically deleted.
- All other data collected in the cloud will be stored for 3 months. Data older than 3 months will be automatically deleted.

Data integrity in the cloud cannot be guaranteed as bad internet connections and other network anomalies may influence the correctness of the data displayed in the cloud.

### 2.3 LED

#### Ready LED

After Power ON, the gateway starts booting. Once the system has booted up, the Ready LED will show solid green.

#### Link/Act LED

When the Ethernet port is connected to the network, Link/Act will show solid green and if there is traffic on the Ethernet, this LED will flash.

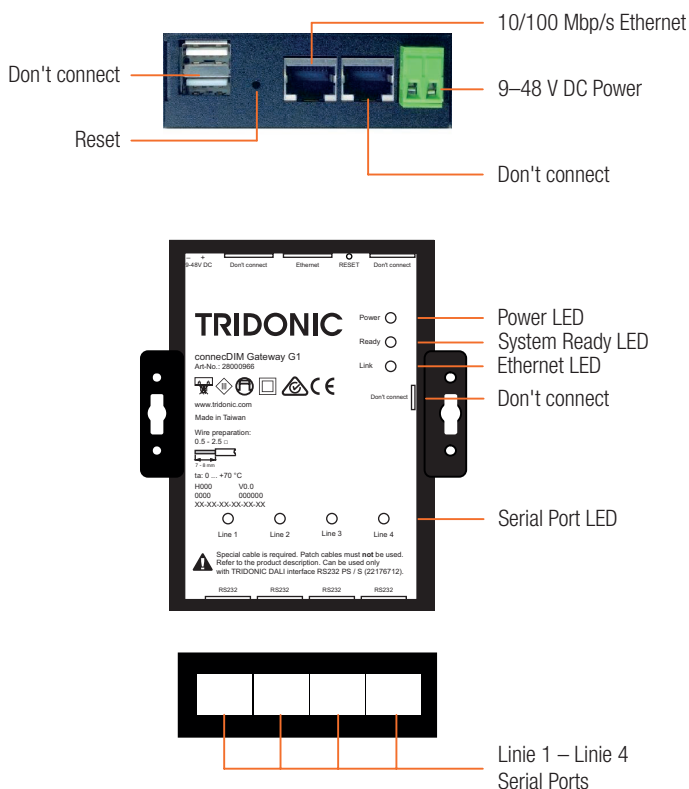
#### Serial Port LED

These four dual colour LEDs indicate data traffic at the serial ports. When the RXD line is high the green light will be ON and when the TXD line is high the yellow light will be ON.

#### Power Connector

Connect the 9 to 48 VDC power line to the gateway. If power is being supplied correctly, the power LED will show solid green.

### 2.4 Device overview



**!** Reset button will trigger a reboot of the Gateway. Data stored on the Gateway will not be deleted.

### 3. Interface

#### 3.1 Serial Port

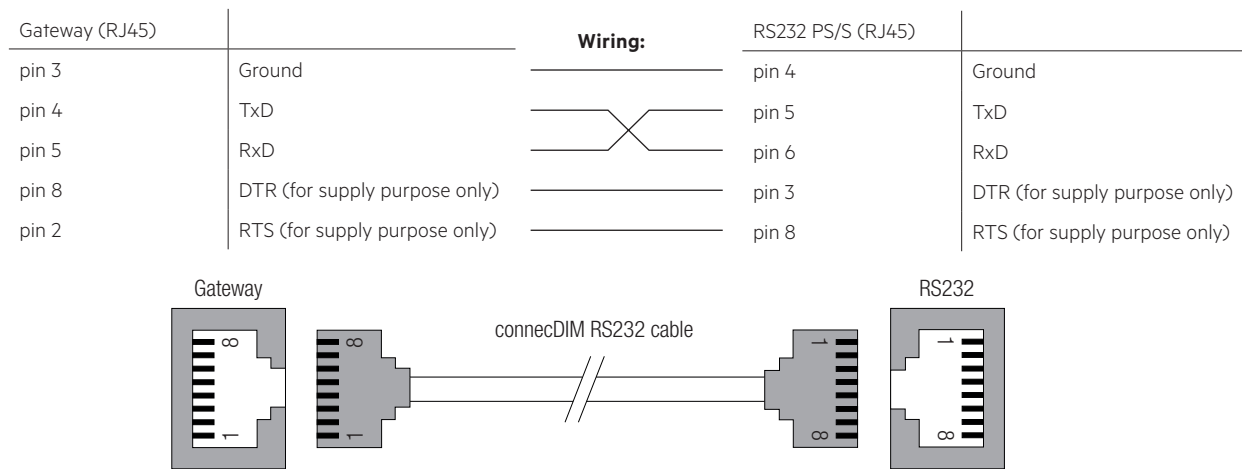
Serial Port Line 1 to Line 4

The four serial ports are configured to RS-232 and can be connected to TRIDONIC DALI Interface RS232 PS/S. They use RJ45 connectors and the pin assignment is shown in the following table.



Please note that standard patch cables should **not** be used! Refer also to the product datasheet for TRIDONIC DALI Interface RS232 PS/S. Available online at [www.tridonic.com](http://www.tridonic.com).

Please ensure that the correct RJ45 connector is connected to the gateway and to the RS232 DALI Interface. The cables supplied are clearly marked with "BOX" or with different colors. The BOX end (transparent connector) goes to the gateway and the other end (black connector) goes to DALI Interface RS232 PS/S.



### 4. Installation

#### 4.1 Safety instructions



The device may only be used for the specified area of application.

Relevant health and safety regulations must be observed.

The voltage supply must be disconnected when the device is being assembled and installed.

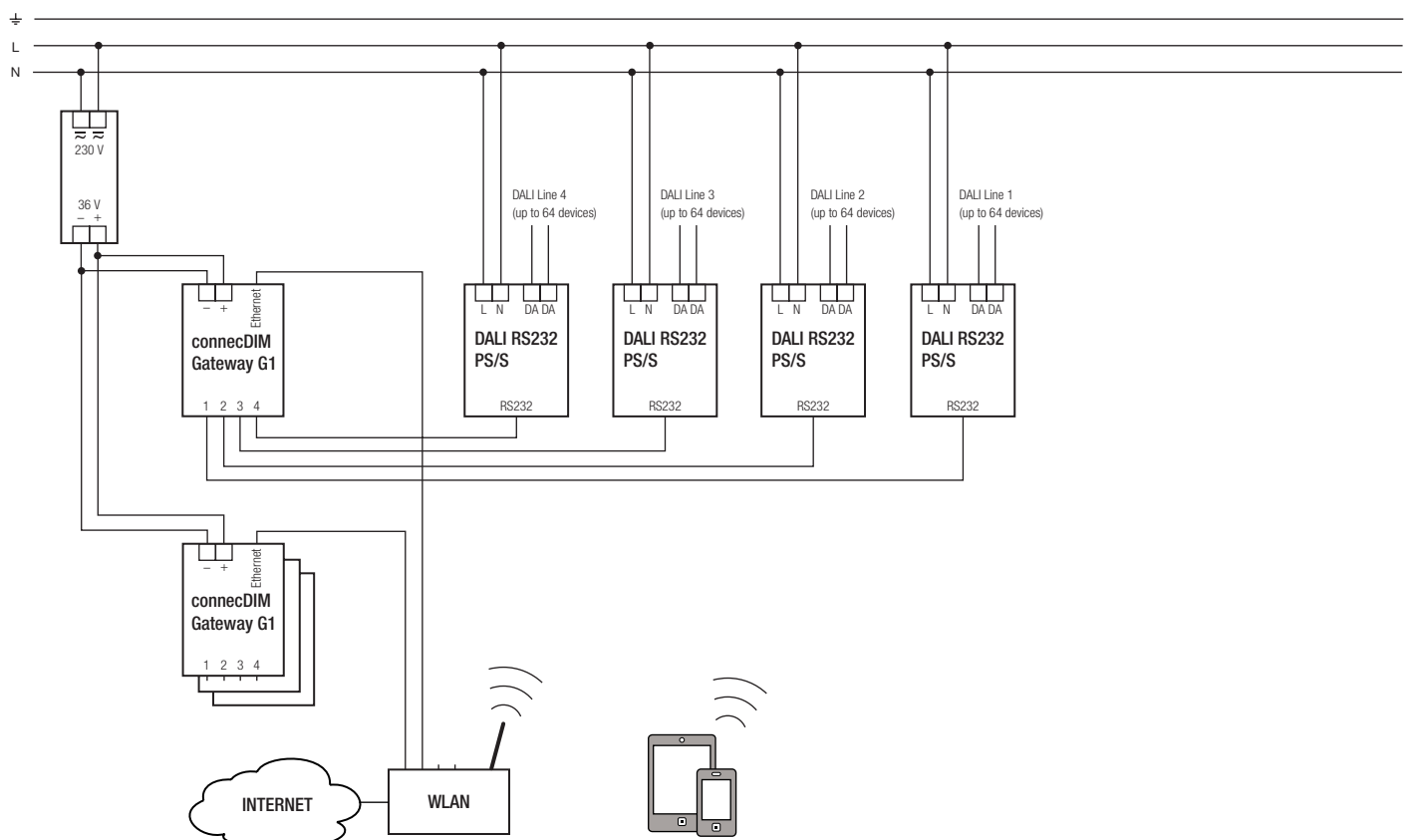
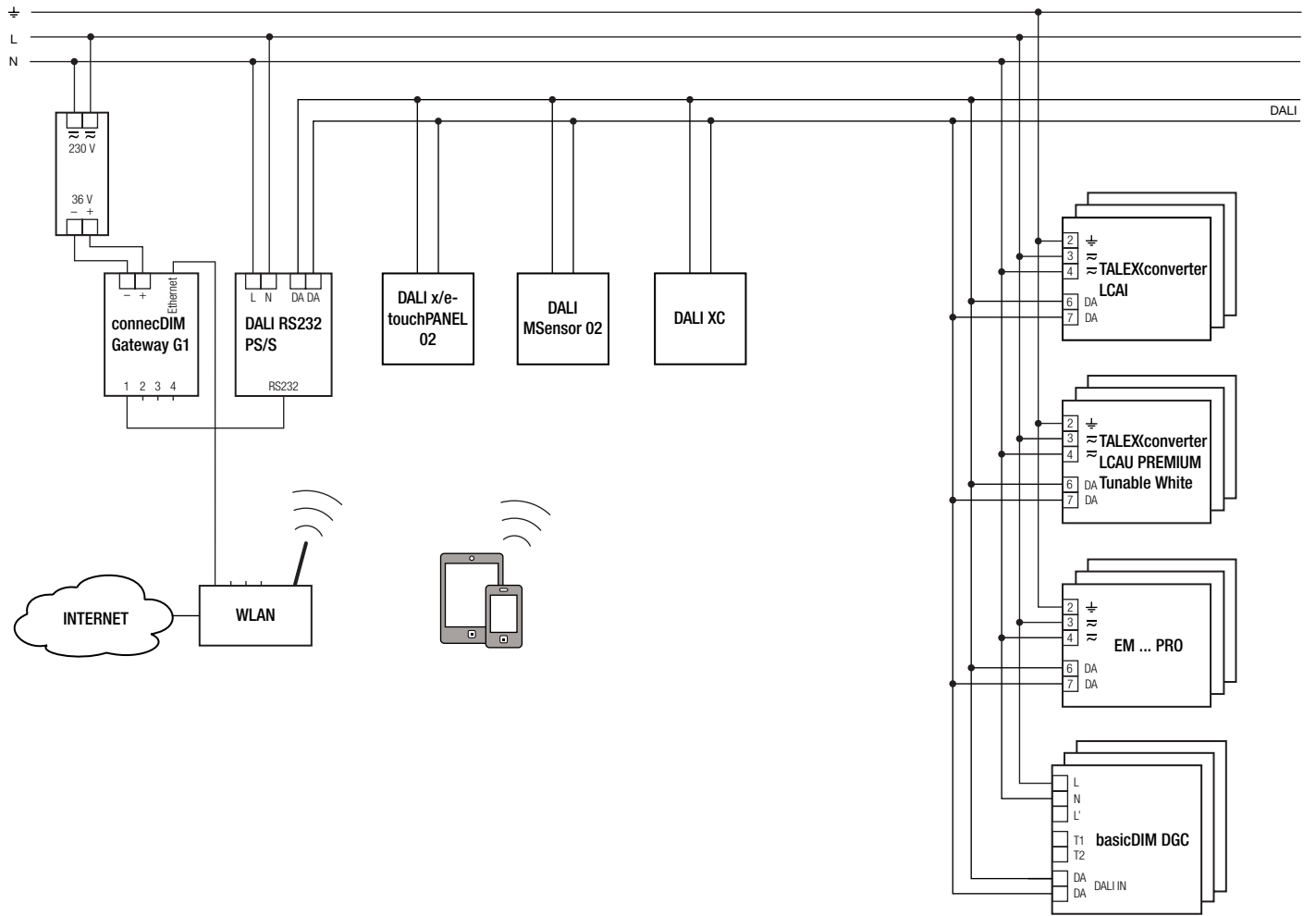
Only qualified personnel may assemble, install and commission the device.

Do not use DALI Interface RS232 PS/S with any other devices that supply power (e.g. DALI PS).

Another way to test if another power supplying device is on the DALI signal wire is to connect:

DALI Interface RS232 PS/S to the DALI signal wire with the mains supply disconnected. If the power LED and the status LED are on (typically green) despite no mains supply to DALI Interface RS232 PS/S then another device is supplying power on the DALI signal wire.

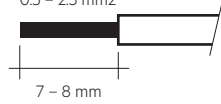
4.2 Wiring examples



## 4.3 Wiring type and cross section

The wiring can be solid wire, stranded wire or stranded wire with end sleeve with a cross-section of 0.5 mm<sup>2</sup> to 2.5 mm<sup>2</sup>.

wire preparation:  
0.5 – 2.5 mm<sup>2</sup>



## 5. Miscellaneous

### 5.1 Additional information

Additional technical information at [www.tridonic.com](http://www.tridonic.com) → Technical Data

Guarantee conditions at [www.tridonic.com](http://www.tridonic.com) → Services

Life-time declarations are informative and represent no warranty claim.  
No warranty if device was opened.