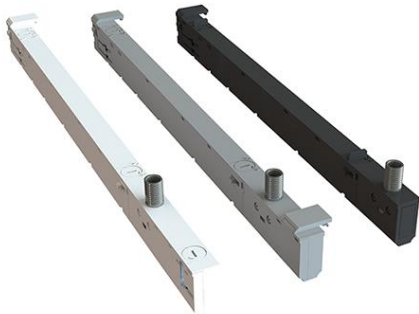


Driver LC 28W 100-700mA 40V flexC T EXC

Baureihe excite in-track

**Produktbeschreibung**

- _ Konstantstrom- / Stromschienen-LED-Treiber
- _ Komplette Stromschiene, was ein kompromissloses Design ermöglicht
- _ Optionales Zubehör zur Befestigung des Leuchtenkopfes
- _ Für Leuchten der Schutzklasse II
- _ Temperaturschutz gemäß EN 61347-2-13 C5e
- _ Wählbarer fixer Ausgangsstrom via DIP-Schalter zwischen 100 und 700 mA (voreingestellter Strom 100 mA)
- _ Max. Ausgangsleistung 28 W
- _ Bis zu 86 % Effizienz
- _ Leistungsaufnahme im Stand-by < 0,5 W
- _ Nominale Lebensdauer bis zu 100.000 h
- _ 5 Jahre Garantie (Bedingungen siehe

<https://www.tridonic.com/de/int/services/herstellergarantiebedingungen>)

Gehäuse-Eigenschaften

- _ Gehäuse: Polycarbonat schwarz, weiß oder grau
- _ Schutzart IP20

Schnittstellen

- _ Klemmen: 45° Steckklemmen

Funktionen

- _ Übertemperaturschutz
- _ Überlastschutz
- _ Kurzschlusschutz
- _ Leerlaufschutz
- _ Schutz gegen Burst-Spannungen 2 kV
- _ Schutz gegen Surge-Spannungen 1 kV (zwischen L und N)

Typische Anwendung

- _ Für Spotlight bei Handels- und Gastronomie-Anwendungen

Website

<http://www.tridonic.com/28005610>



Dekorativ



Halle



Boden | Wand



Linear



Freistehend



Downlights



Straße



Spotlights



Fläche

Driver LC 28W 100-700mA 40V flexC T EXC

Baureihe excite in-track

Bestelldaten

Typ	Artikelnummer	Farbe	Verpackung Karton	Verpackung Kleinmengen	Gewicht pro Stk.
LC 28/100-700/40 FlexC Ti-B EXC	28005610	Schwarz	50 Stk.	1.600 Stk.	0,1 kg
LC 28/100-700/40 FlexC Ti-W EXC	28005611	Weiß	50 Stk.	1.600 Stk.	0,1 kg
LC 28/100-700/40 FlexC Ti-G EXC	28005612	Grau	50 Stk.	1.600 Stk.	0,1 kg

Technische Daten

Netzspannungsbereich	220 – 240 V
Wechselspannungsbereich	198 – 264 V
Max. Eingangsstrom (bei 230 V, 50 Hz, Volllast)	0,15 A
Netzfrequenz	50 / 60 Hz
Max. Eingangsleistung	33 W
Max. Ausgangsleistung	28 W
Typ. Wirkungsgrad (bei 230 V, 50 Hz, Volllast)	86 %
λ (bei 230 V, 50 Hz, Volllast)	0,96
Einschaltstrom (Spitze / Dauer)	0,25 A / 15 ms
Ausgangsstromtoleranz	$\pm 5 \%$
Max. Ausgangsspitzenstrom	735 mA
Max. Ausgangsspannung (U-OUT)	60 V
THD (bei 230 V, 50 Hz, Volllast)	< 20 %
Ausgangsstrom NF Restwelligkeit (< 120 Hz)	$\pm 0,2 \%$
Ausgang P_ST_LM (bei Volllast)	≤ 1
Ausgang SVM (bei Volllast)	$\leq 0,4$
Startzeit (bei 230 V, 50 Hz, Volllast)	< 0,5 s
Abschaltzeit (bei 230 V, 50 Hz, Volllast)	$\leq 0,5$ s
Umgebungstemperatur t_a (bei Lebensdauer 100.000 h)	25 °C
Stoßspannungsfestigkeit (zwischen L - N)	1 kV
Lebensdauer	bis zu 50.000 h
Garantie (Bedingungen siehe www.tridonic.com)	5 Jahr(e)
Abmessungen L x B x H	300 x 28,4 x 13,8 mm

PrüfzeichenIP20 SELV  RoHS**Normen**

EN 55015, EN 61000-3-2, EN 61000-3-3, EN 61347-1, EN 61347-2-13, EN 61547, EN 62384, EN 60598-1, EN 61000-4-4, EN 61000-4-5

Spezifische technische Daten

Typ	Ausgangsstrom	Min. Ausgangsspannung	Max. Ausgangsspannung	Max. Ausgangsleistung	tc Punkt max.	Umgebungstemperatur Ta	I-out select
LC 28/100-700/40 FlexC Ti-B EXC	100 mA	12 V	40 V	4 W	85 °C	-20 ... +35 °C	1=off / 2=off / 3=off / 4=off
LC 28/100-700/40 FlexC Ti-B EXC	200 mA	12 V	40 V	8 W	85 °C	-20 ... +35 °C	1=off / 2=off / 3=on / 4=off
LC 28/100-700/40 FlexC Ti-B EXC	300 mA	12 V	40 V	12 W	85 °C	-20 ... +35 °C	1=off / 2=on / 3=off / 4=off
LC 28/100-700/40 FlexC Ti-B EXC	400 mA	12 V	40 V	16 W	85 °C	-20 ... +35 °C	1=on / 2=off / 3=off / 4=off
LC 28/100-700/40 FlexC Ti-B EXC	500 mA	12 V	40 V	20 W	85 °C	-20 ... +35 °C	1=on / 2=off / 3=on / 4=on
LC 28/100-700/40 FlexC Ti-B EXC	600 mA	12 V	40 V	24 W	85 °C	-20 ... +35 °C	1=on / 2=on / 3=off / 4=off
LC 28/100-700/40 FlexC Ti-B EXC	700 mA	12 V	40 V	28 W	85 °C	-20 ... +35 °C	1=on / 2=on / 3=on / 4=on
LC 28/100-700/40 FlexC Ti-W EXC	100 mA	12 V	40 V	4 W	85 °C	-20 ... +35 °C	1=off / 2=off / 3=off / 4=off
LC 28/100-700/40 FlexC Ti-W EXC	200 mA	12 V	40 V	8 W	85 °C	-20 ... +35 °C	1=off / 2=off / 3=on / 4=off
LC 28/100-700/40 FlexC Ti-W EXC	300 mA	12 V	40 V	12 W	85 °C	-20 ... +35 °C	1=off / 2=on / 3=off / 4=off
LC 28/100-700/40 FlexC Ti-W EXC	400 mA	12 V	40 V	16 W	85 °C	-20 ... +35 °C	1=on / 2=off / 3=off / 4=off
LC 28/100-700/40 FlexC Ti-W EXC	500 mA	12 V	40 V	20 W	85 °C	-20 ... +35 °C	1=on / 2=off / 3=on / 4=on
LC 28/100-700/40 FlexC Ti-W EXC	600 mA	12 V	40 V	24 W	85 °C	-20 ... +35 °C	1=on / 2=on / 3=off / 4=off
LC 28/100-700/40 FlexC Ti-W EXC	700 mA	12 V	40 V	28 W	85 °C	-20 ... +35 °C	1=on / 2=on / 3=on / 4=on
LC 28/100-700/40 FlexC Ti-G EXC	100 mA	12 V	40 V	4 W	85 °C	-20 ... +35 °C	1=off / 2=off / 3=off / 4=off
LC 28/100-700/40 FlexC Ti-G EXC	200 mA	12 V	40 V	8 W	85 °C	-20 ... +35 °C	1=off / 2=off / 3=on / 4=off
LC 28/100-700/40 FlexC Ti-G EXC	300 mA	12 V	40 V	12 W	85 °C	-20 ... +35 °C	1=off / 2=on / 3=off / 4=off
LC 28/100-700/40 FlexC Ti-G EXC	400 mA	12 V	40 V	16 W	85 °C	-20 ... +35 °C	1=on / 2=off / 3=off / 4=off
LC 28/100-700/40 FlexC Ti-G EXC	500 mA	12 V	40 V	20 W	85 °C	-20 ... +35 °C	1=on / 2=off / 3=on / 4=on
LC 28/100-700/40 FlexC Ti-G EXC	600 mA	12 V	40 V	24 W	85 °C	-20 ... +35 °C	1=on / 2=on / 3=off / 4=off
LC 28/100-700/40 FlexC Ti-G EXC	700 mA	12 V	40 V	28 W	85 °C	-20 ... +35 °C	1=on / 2=on / 3=on / 4=on

ACU Retaining Collar M10

Zubehör



ACU Retaining Collar M10

Bestelldaten

Typ	Artikelnummer	Verpackung Karton	Gewicht pro Stk.
ACU RETAINING COLLAR M10	28005690	25 Stk.	0,003 kg

Produktbeschreibung

- _ Passend für M10 x 1 Gewindemutter
- _ Smart Slider für 360° Drehung (max. Drehmoment 1,5 Nm)
- _ Gewindehülse zur Leuchtenmontage
- _ Das Zubehör ist nicht im Lieferumfang enthalten und muss separat bestellt werden.

Website

<http://www.tridonic.com/28005690>


ACU Retaining Rotary Stop

Zubehör



Bestelldaten

Typ	Artikelnummer	Verpackung Karton	Gewicht pro Stk.
ACU RETAINING ROTARY STOP	28005691	25 Stk.	0,001 kg

Produktbeschreibung

- _ Drehanschlag für die Leuchtenmontage
- _ Verhindert, dass sich die Ausgangsverdrahtung durch Überdrehung löst
- _ Wir empfehlen die Verwendung einer Pinzette für die Installation
- _ Das Zubehör ist nicht im Lieferumfang enthalten und muss separat bestellt werden.

Website

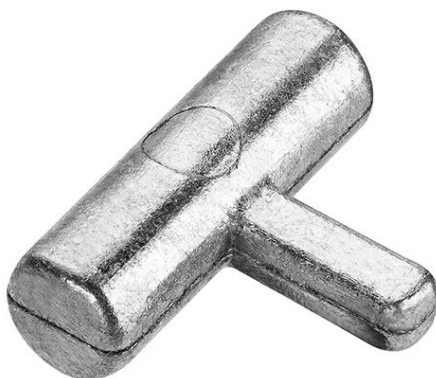
<http://www.tridonic.com/28005691>


ACU Retaining Collar M10 & Rotary Stop

Zubehör



ACU Retaining Collar M10



ACU Rotary Stop

Produktbeschreibung

- _ Passend für M10 x 1 Gewindemutter
- _ Smart Slider für 360° Drehung (max. Drehmoment 1,5 Nm)
- _ Gewindehülse zur Leuchtenmontage
- _ Drehanschlag für die Leuchtenmontage
- _ Verhindert, dass sich die Ausgangsverdrahtung durch Überdrehung löst
- _ Wir empfehlen die Verwendung einer Pinzette für die Installation
- _ Ein Satz enthält 1 Stück ACU Retaining Collar M10 und 1 ACU Rotary Stop
- _ Das Zubehör ist nicht im Lieferumfang enthalten und muss separat bestellt werden.

Website
<http://www.tridonic.com/28006396>
**Bestelldaten**

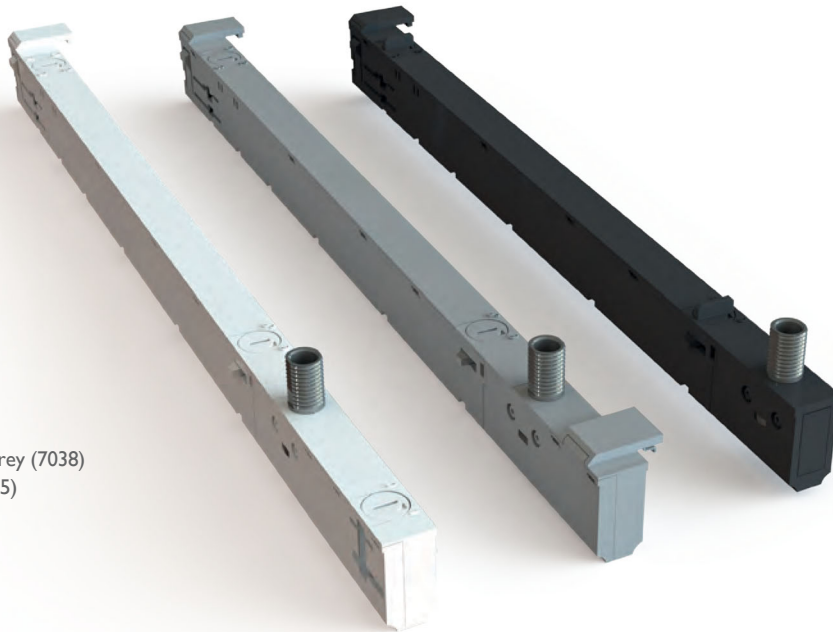
Typ	Artikelnummer	Verpackung Karton	Gewicht pro Stk.
ACU RETAINING COLLAR M10 & ROTARY STOP	28006396	500 Stk.	0,013 kg

INVITRACK – THE INVISIBLE TRACK DRIVER

Nordic Power Converters have joined forces, and combined cutting-edge LED drivers with world-class track components to fix an industry eye-sore; the new InviTrack driver series puts the entire LED driver inside the track. The driver is virtually invisible, the only thing seen on the track is your perfectly designed luminaire. Set your design free and improve the Quality of Light at the same time.

Product Advantages

- **Completely in-track**, enabling a true no-compromise design.
- **Flicker free**, no visible or perceivable flicker (IEEE1789 NOEL compliant, very low PstLM and SVM values).
- **Low temperature**, ensuring high reliability through high efficiency and good thermal design.
- **No inrush current**, enabling use of the full power rating of the main fuse.
- **Fits all major tracks**, including Global, Stucchi, PowerGear and more.



Available in
white (9016), grey (7038)
and black (9005)

Main specifications

Specification item	Value
Input voltage	220...240 V
PF	> 0.96
THD	< 20%
Inrush	>100 drivers on a MCB16A type B fuse
Efficiency	86%
Isolation	SELV/Class-II
Output power	28 W

Specification item	Value
Output current	100...700 mA
Output voltage	12...40 V
Size	300×13.8×28.4 mm
Luminaire weight, max	1.5 kg
Lifetime	50,000 hrs
Ambient temperature	-20 °C to 35 °C
Tcase max	85 °C

Electrical specifications

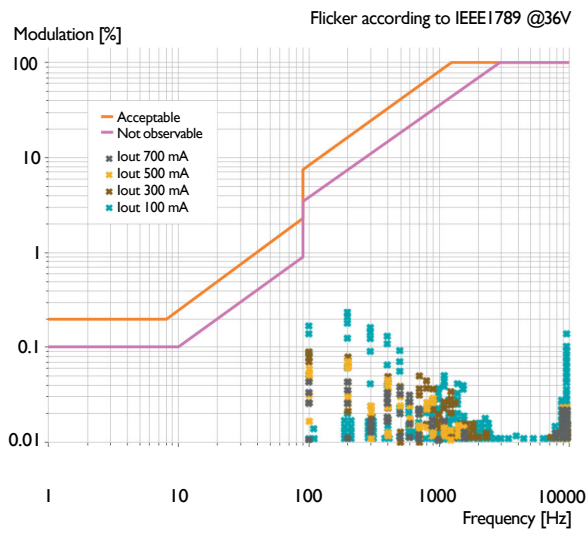
Input characteristics

Specification item	Value	Condition
Rated input voltage range	220...240 V _{AC}	Performance range
Rated input voltage	230 V _{AC}	
Rated input frequency range	50/60 Hz	Performance range
Rated input current	150 mA	@ 28 W _{out} and 230 V _{ac}
Rated input power	33 W	@ 28 W _{out} and 230 V _{ac}
Power factor	> 0.96	@ 28 W _{out} and 230 V _{ac}
Total harmonic distortion	< 20%	@ 28 W _{out} and 230 V _{ac}
Efficiency	86%	@ 28 W _{out} and 230 V _{ac}
Standby	0.25 W	
EU Ecodesign	Compliant	Requirements of December 2019
Input voltage range	198...264 V _{AC}	Operational range
Input frequency range	47...63 Hz	Operational range
Isolation input to output	SELV	
Inrush current I _{PEAK}	0.25 A	@ rated input voltage
Inrush current T _{WIDTH}	15 ms	@ rated input voltage @ 50% I _{PEAK}
Drivers/MCB I6A type B	> 100 pcs	

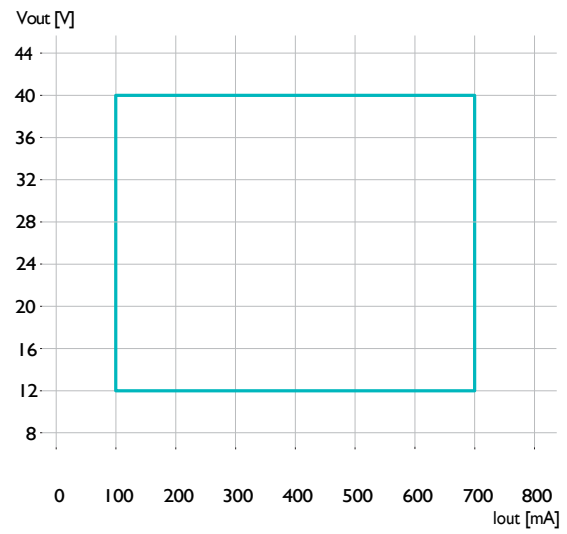
Output characteristics

Specification item	Value	Condition
Control method	Constant current	
Output voltage range	12...40 V _{DC}	
Output voltage (max)	60 V _{DC}	Peak voltage at open load
Output current range	100...700 mA	Set via dipswitch
Output current tolerance	±5%	@ 36 V _{DC}
Output flicker	IEEE1789 NOEL	Compliant with IEEE1789 No Observable Effect Limit
PstLM	< 0.1	@ 36 V _{dc} and 700 mA
SVM	< 0.05	@ 36 V _{dc} and 700 mA
Output current ripple, <120 Hz	0.2%	@ 36 V _{DC}
Output current ripple, <3 kHz	0.2%	@ 36 V _{DC}
Output power	28 W	@ 40 V _{DC}

Flicker measurement

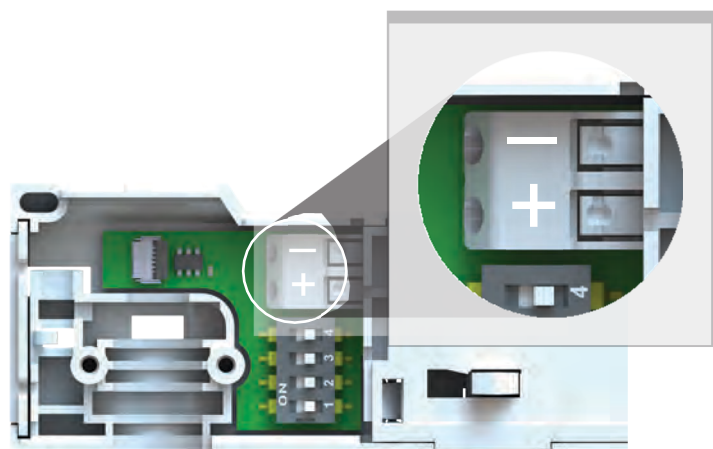


Output window



Wiring and connections

Specification item	Value	Condition
Output wire cross-section	0.2...0.75 mm ²	Solid or strand wire
	24...18 AWG	Solid or strand wire
Output wire strip length	7...9 mm	
Screw size	Torx 6	
Maximum cable length	300 mm	Total length of wiring including LED module, one way
Maximum luminaire weight	1.5 kg	According to EN 60570

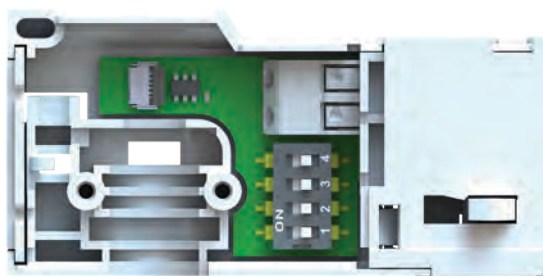


Set output current

Via dipswitch

Value	Switch 1	Switch 2	Switch 3	Switch 4
700 mA	ON	ON	ON	ON
650 mA	ON	ON	ON	–
600 mA	ON	ON	–	ON
550 mA	ON	ON	–	–
500 mA	ON	–	ON	ON
450 mA	ON	–	ON	–
425 mA	ON	–	–	ON
400 mA	ON	–	–	–

Value	Switch 1	Switch 2	Switch 3	Switch 4
375 mA	–	ON	ON	ON
350 mA	–	ON	ON	–
325 mA	–	ON	–	ON
300 mA	–	ON	–	–
250 mA	–	–	ON	ON
200 mA	–	–	ON	–
150 mA	–	–	–	ON
100 mA	–	–	–	–



Compatible tracks

Manufacturer	Part number
Global	XTS Series, XTSF Series, XTSC Series, XTSCF Series
Stucchi	9000 ST, 9000A ST, 9000 R, 9000 H, 9000 ST15
PowerGear	PRO-04 Series, PRO-R4 Series, PRO-06 Series, PRO-R6 Series

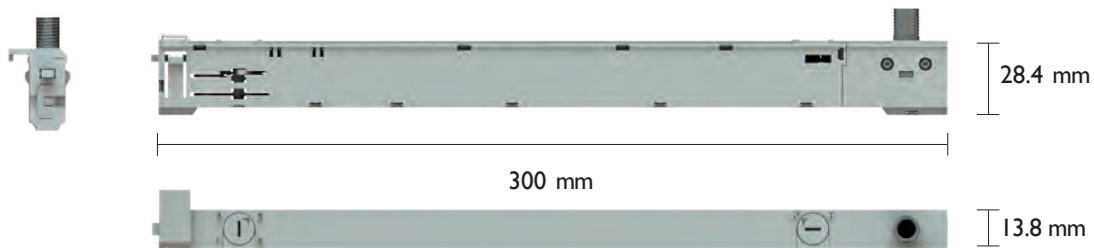
Tests have been done with tracks taken from the market in 2020-2023.

Nordic Power Converters has no control or responsibility on any future or past possible changes made by different manufacturers that could affect the compatibility between tracks and adapters.

When product is used, a clearance distance between the InviTrack casing and any of the track's non-insulated live parts (incl. DALI conductors) must be minimum 3 mm. The retaining collar is not intended to be electrically connected to the LED output terminals or protective earth.

Dimensions and weight

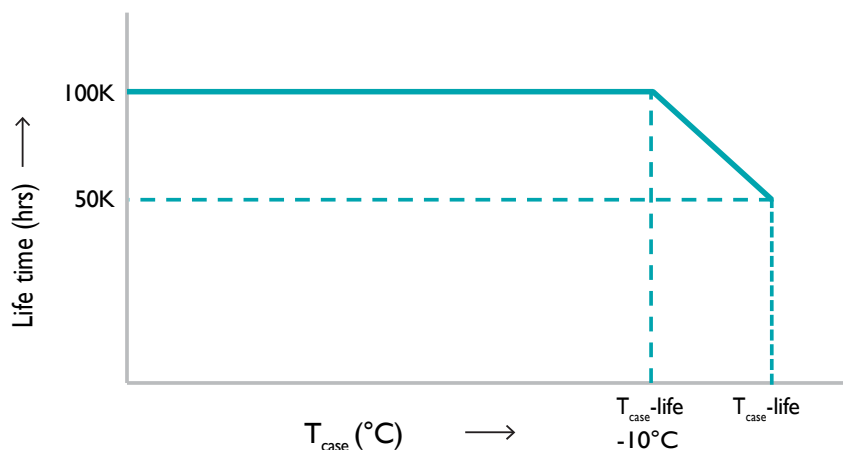
Specification item	Value	Condition
Length	300 mm	See below
Width	13.8 mm	
Height	28.4 mm	Without retaining collar
Weight	110 g	



LC 28/100-700/40 flexC Ti EXC

Operating Conditions

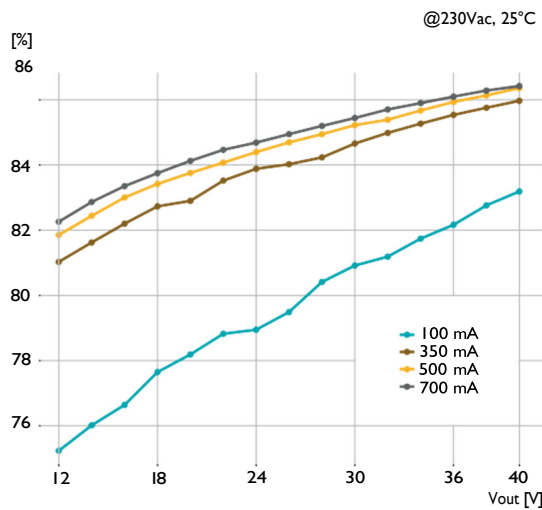
Specification item	Value	Condition
Ambient temperature	-20...+35 °C	Higher ambient temperature allowed as long as $T_{\text{case-max}}$ is not exceeded
$T_{\text{case-max}}$	85 °C	Maximum temperature measured at $T_{\text{case-point}}$
$T_{\text{case-life}}$	85 °C	Measured at $T_{\text{case-point}}$
Relative humidity	5...85%	Non-condensing
Mains surge immunity (diff. mode)	1 kV	Acc. IEC61000-4-5 2 Ohm 1.2/50 us, 8/20 us
Mains surge immunity (comm. mode)	2 kV	Acc. IEC61000-4-5 2 Ohm 1.2/50 us, 8/20 us
Lifetime	50,000 hrs	Measured temperature at $T_{\text{case-point}}$ is $T_{\text{case-life}}$. Maximum failures = 10%
Warranty	5 years	



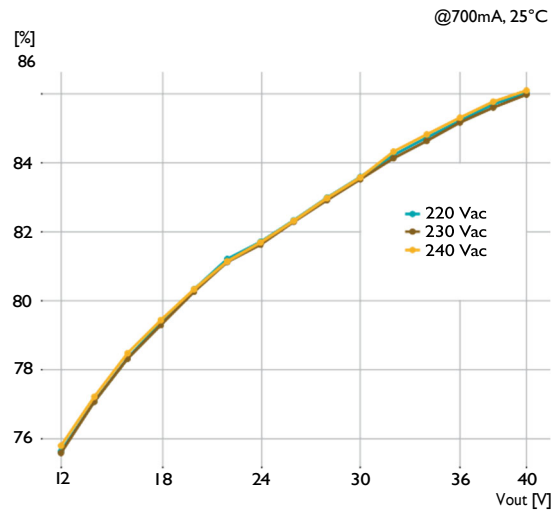
Conformity and standards

Specification item	Value	Condition
Protection class	Class II	
Isolation voltage	3 kV	
Casing class	IP20	
Approvals	CE	
EMC standards	EN 55015, EN 61547, EN 61000-3-2 (class C)	
CB certificate (safety standards)	IEC 61347-1, IEC 61347-2-13, IEC 60570, IEC 62384	The CB certificate includes EU group differences, AU and NZ

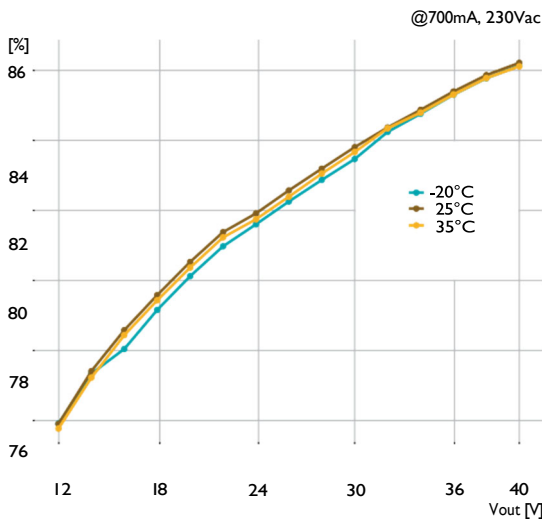
Efficiency vs. Output current



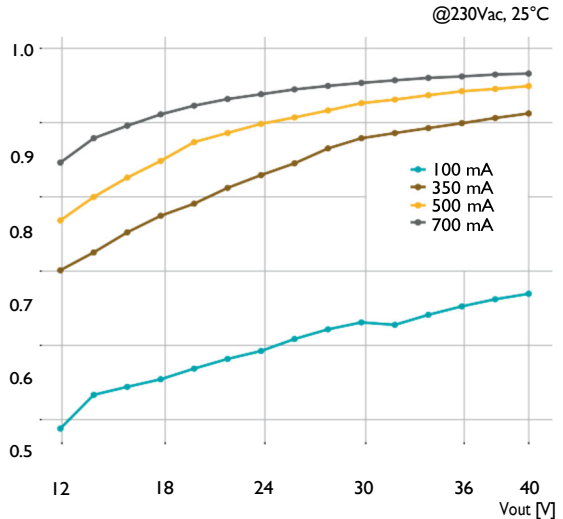
Efficiency vs. Input voltage



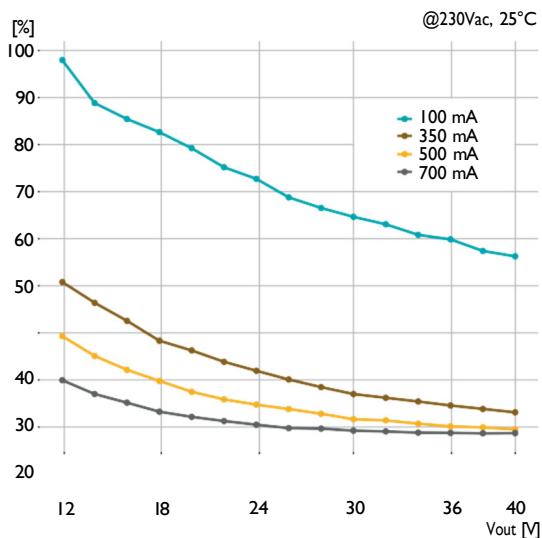
Efficiency vs. Temperature



Power factor vs. Output current



THD vs. Output current



Dim Efficiency vs. Output voltage

